



11 SUSTAINABLE CITIES AND COMMUNITIES



11.2 - Support of Arts and Heritage

In addition to the vibrant cultural and academic activities, Sharda University is deeply committed to preserving and promoting the rich cultural heritage in and around Delhi. The university takes proactive measures to ensure that students not only engage with contemporary pursuits but also develop a profound appreciation for the historical and cultural significance of the region.

The university actively supports activities related to heritage in and around Delhi by organizing regular visits to buildings and monuments of cultural and heritage importance. These trips are meticulously curated to provide students with an immersive experience, allowing them to gain insights into the architectural marvels and historical significance of these structures. Moreover, some of these visits are designed to encourage students to document these heritage sites, fostering a sense of responsibility towards preserving cultural legacies for future generations.

Furthermore, Sharda University emphasizes the importance of student exposure to our rich heritage and culture. By facilitating these visits and offering firsthand experiences, the university aims to instil a deep sense of pride and understanding of the cultural tapestry that defines not only the region but also the nation and the globe. This initiative aligns with the university's commitment to holistic education, ensuring that students not only excel academically but also develop a profound connection to their cultural roots.

11.2.1 Public Access to Buildings

Provide public access to buildings and/or monuments or natural heritage landscapes of cultural significance

Response: Some free access to buildings

The buildings of cultural significance includes the 'Temple complex' and all the 'Auditoriums' inside the university campus with free public access to them. Typically, to enter the university premises, visitors, including students, faculty, staff, and guests, are required to follow the established protocols and procedures for access. Visitors are usually required to register at the entrance gate or security checkpoint. They may be asked to provide valid identification and state the purpose of their visit. Students and faculty members are issued identification cards that grant them entry to the premises.

a. University Temple - The on-campus temple building has an open access to the public and visitors while they are accessing the campus grounds.

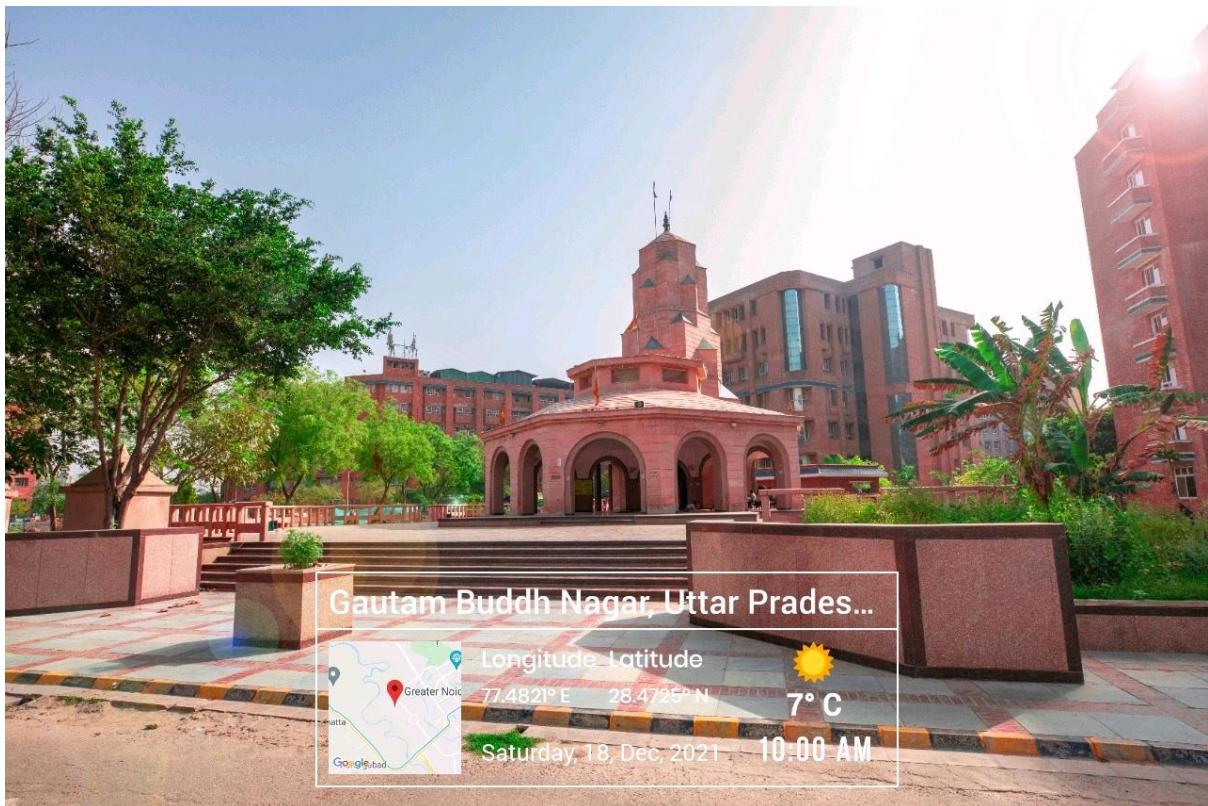


Fig 1 University temple complex



Fig 2 Goddess Saraswati-The goddess of education at Block 2

b. University Auditoriums – University auditoriums at Sharda University hold significant cultural value as they serve as spaces for various intellectual, artistic, and cultural activities that contribute to the holistic development of students and the broader academic community. These auditoriums are more than just physical structures; they represent hubs of cultural exchange, artistic expression, and intellectual discourse. The auditoriums host a diverse range of cultural events, including musical performances, theatrical productions, dance recitals, and art exhibitions. These events not only showcase the artistic talents of the students but also foster a vibrant cultural atmosphere within the university.



Fig 3 Anand Swaroop Central Auditorium

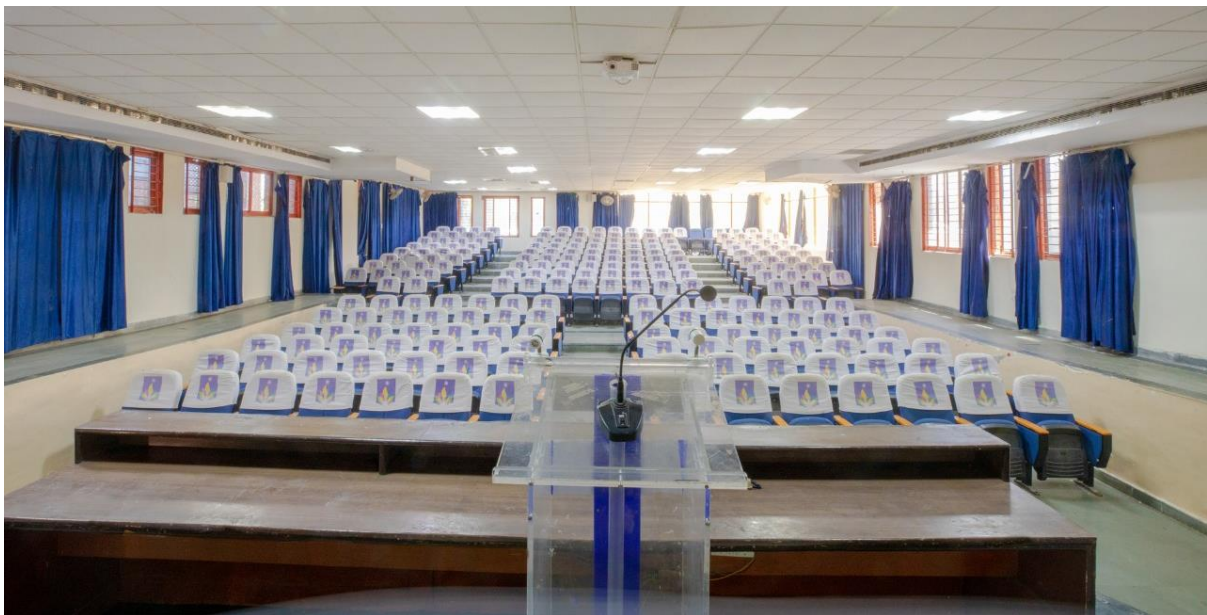


Fig 4 Vishveshwariya Auditorium



Fig 5 APJ Abdul Kalam Auditorium

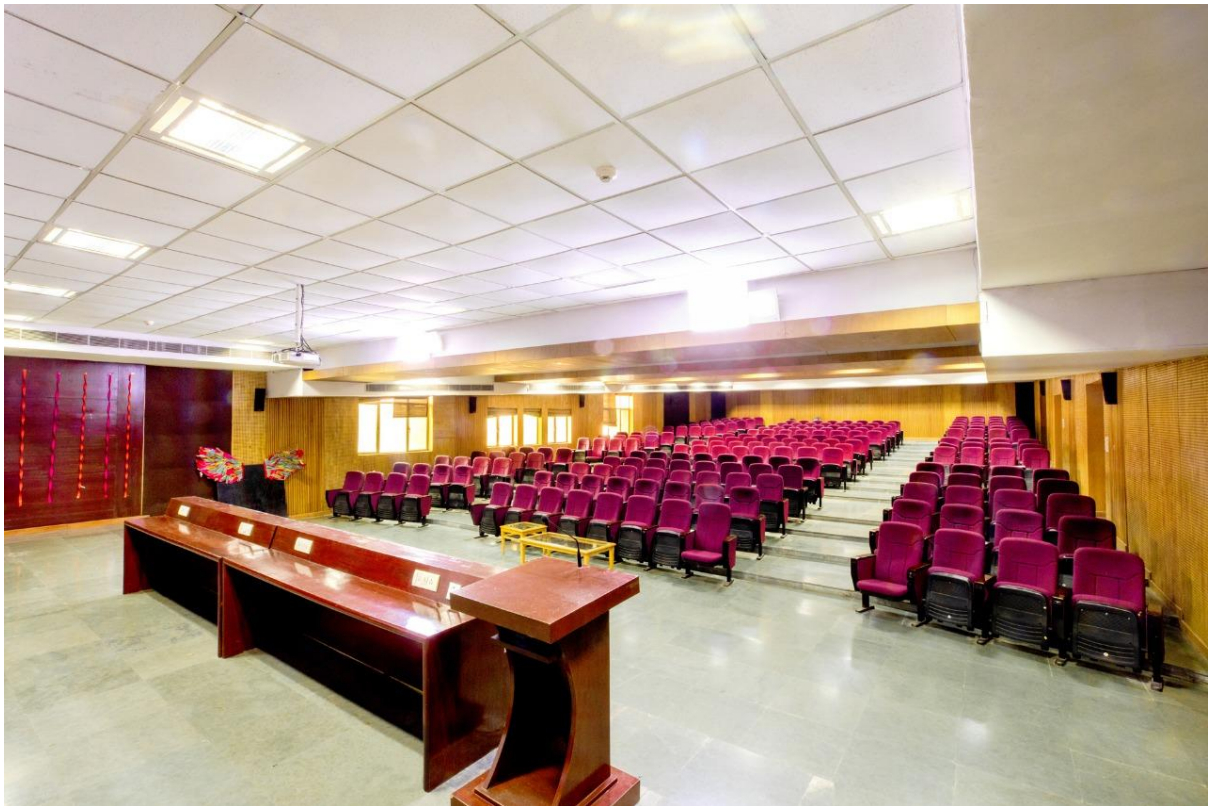


Fig 6 Auditorium at Sharda School of Business Studies



Fig 7 Auditorium at Sharda School of Medical Sciences and Research



Fig 8 Auditorium at SMSR

11.2.2 Public access to libraries

Provide public access to libraries including books and publications

Response: Access to all after application

Synonymous with the abode of knowledge, Swami Vivekananda Library and all other school libraries at Sharda University are stocked with more than 1.5 Lac of books and thousands of Print journals to ignite the wisdom growth of the students. Library is frequently updated with new books and other useful study material for students from diverse streams. In the quest to make the Library management immensely convenient for the users, Sharda University Library provides vital support complementing academic activities to students, researchers and staff. It provides access to the world of information - whether online, multimedia or in print. In order to effectively capitalize on the opportunities provided by radical changes in technology, pedagogy and research practices, the libraries operate in a number of profound ways and work in partnership with faculty members to enhance student's research skill development, encompassing both information literacy and learning skills. The libraries now do provide effective research and learning environments with a user-focused approach which is the hallmark of SU library.

Currently, the libraries allows admission to all the students, faculties and university staff of Sharda University, but entry to the library can be availed by public in special circumstances and with permission from the designated authorities.

- Library is accessible to the public with the due approval of the competent authority (Monday to Friday): 8.35 A.M. to 7 P.M.
- Library is accessible to the Under Privileged Section of Society with the due approval of the competent authority (Monday to Friday) : 8.35 A.M. to 7 P.M.

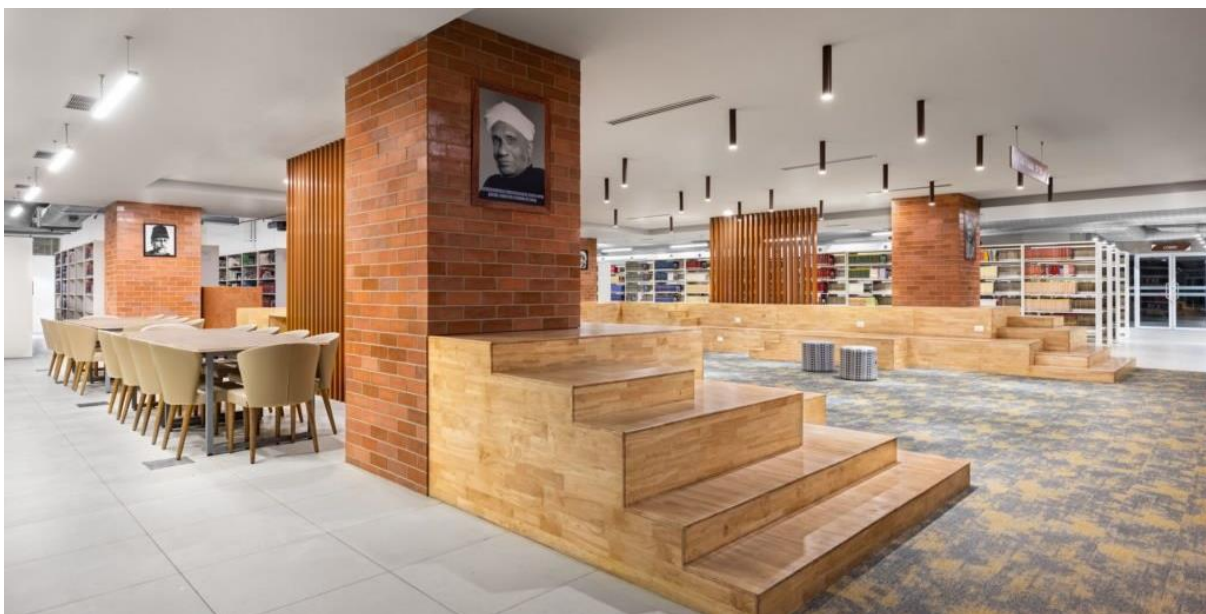
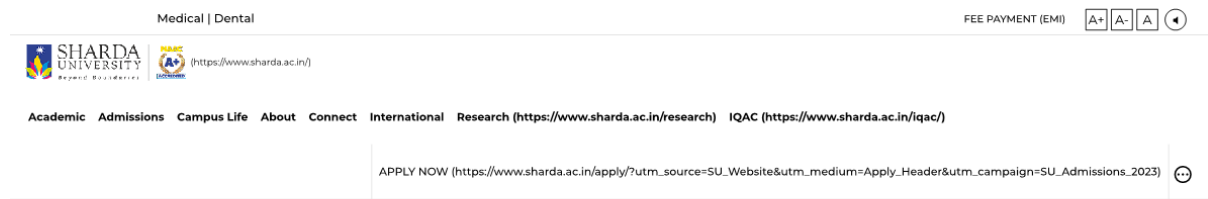


Fig 9 Central Library, Sharda University

Evidence:



Learning Resource Centre

OPAC (<http://103.101.118.23>)

[\(https://www.sharda.ac.in/\)](https://www.sharda.ac.in/) > [Campus Facilities \(https://www.sharda.ac.in/campuslife/campus-facilities\)](https://www.sharda.ac.in/campuslife/campus-facilities) > [Library](#)

Overview

- > [Learning Resouce Center \(https://www.sharda.ac.in/library\)](https://www.sharda.ac.in/library)
- > [Library At A Glance \(https://www.sharda.ac.in/library/library_glan](https://www.sharda.ac.in/library/library_glan)
[ce\)](https://www.sharda.ac.in/library/library_glan)
- > [e-Resources \(https://www.sharda.ac.in/library/e_sour](https://www.sharda.ac.in/library/e_sour)
[ces\)](https://www.sharda.ac.in/library/e_sour)
- > [University Publications \(https://www.sharda.ac.in/library/university_p](https://www.sharda.ac.in/library/university_p)
[ublication\)](https://www.sharda.ac.in/library/university_p)
- > [Library Committee \(https://www.sharda.ac.in/library/library_com](https://www.sharda.ac.in/library/library_com)
[mittee\)](https://www.sharda.ac.in/library/library_com)
- > [Library Minutes of Meetings \(https://www.sharda.ac.in/library/library_minu](https://www.sharda.ac.in/library/library_minu)
[tes_of_meeting\)](https://www.sharda.ac.in/library/library_minu)
- > [Library Policy \(https://www.sharda.ac.in/library/library_polic](https://www.sharda.ac.in/library/library_polic)
[y\)](https://www.sharda.ac.in/library/library_polic)
- > [Library Activities \(https://www.sharda.ac.in/library/library_activi](https://www.sharda.ac.in/library/library_activi)
[ty\)](https://www.sharda.ac.in/library/library_activi)
- > [Our Team \(https://www.sharda.ac.in/library/library_team](https://www.sharda.ac.in/library/library_team)
[\)](https://www.sharda.ac.in/library/library_team)
- > [Institutional Repository \(https://www.sharda.ac.in/library/institutional](https://www.sharda.ac.in/library/institutional)
[_repository\)](https://www.sharda.ac.in/library/institutional)
- > [e Content \(https://www.sharda.ac.in/library/e_content\)](https://www.sharda.ac.in/library/e_content)

Learning Resource Centre

Synonymous with the abode of knowledge, Swami Vivekananda Library and all other school libraries at Sharda University are stocked with more than 1.5 Lac of books and thousands of Print journals to ignite the wisdom growth of the students. Library is frequently updated with new books and other useful study material for students from diverse streams.

In our quest to make the Library management immensely convenient for the users, Sharda University Library provides vital support complementing academic activities to students, researchers and staff. We arrange access to the world of information - whether online, multimedia or in print. In order to effectively capitalize on the opportunities provided by radical changes to technology, pedagogy and research practice, the libraries operate in a number of profound ways and work in partnership with faculty members to enhance student's research skill development, encompassing both information literacy and learning skills. The libraries now do provide effective research and learning environments with a user-focused approach which is the hallmark of SU library.

Library Timings:

- **Monday to Friday: 8:35 AM to 10:00 PM**
- **Working Saturdays: (1st, 3rd, and 5th Saturday) - 8:35 AM to 7:00 PM**
- **During Examination: (Monday to Friday) - Upto 12 Midnight**
- **Book Circulation Timings: 9:00 AM to 5:30 PM**

- *Library is accessible to the public with the due approval of the competent authority (Monday to Friday): 8.35 A.M. to 7 P.M.*
- *Library is accessible to the Under Privileged Section of Society with the due approval of the competent authority (Monday to Friday) : 8.35 A.M. to 7 P.M.*

Testimonials
<https://www.sharda.ac.in/student-testimonial>

What's Happening
<https://www.sharda.ac.in/connect/news>

Contact Us
<https://www.sharda.ac.in/contact>

Image Gallery

Hello! How can I help? (<https://static.superbot.works/widget.html?a=qA51JKqOm&l=en&greet=&greetval=>)
Sharda University's Assistance

..t/ps//stl
cSU_ah_0t
work-^widg
^3tr...?

Fig 10 Library webpage with public access details



Fig 11 Central Library, Sharda University



Fig 12 Swami Vivekananda Central Library

11.2.3 Public access to museums

Provide public access to museums, exhibition spaces or galleries, or works of art and artefacts

Response: Access in some circumstances

Being an international university, Sharda university is a mix of the best of the whole world where cultures, traditions, languages are all celebrated and promoted. Sharda University keeps on organizing events promoting art and culture through various workshops, competitions and exhibitions which are open for public viewing, while allowing students from other universities to be a part of these events as well.




SHARDA UNIVERSITY
Beyond Boundaries
Fine Arts Club, Cultural Society
Presents
Mandala
Art Competition

Date – 16th of Feb, 2021 (Tuesday)
Time – 3 p.m. onwards
Mode – live online mode
Theme – Basant Panchami

Convener	Dr Nirupama Gupta Dr Mohit Sahni	(Dean Student Welfare) (Asso. Dean Student Welfare)
Co. Convener	Dr Rachna Bansal	(Club Coordinator, Fine Arts)
Faculty coordinators	Dr Aarti Sharma Dr Roopali Fulzele	(Assistant professor S.B.S) (Assistant professor S.B.S)
Student Coordinator	Mir Ahwar Shumaila Khwaja	

Mandala Art Competition

Last date of registration (15th February)
Register through QR CODE

For any queries contact – 8826747700, 6307454843



Fig 13 Exhibition_Mandala art competition and exhibition




SHARDA UNIVERSITY
Beyond Boundaries
 **Fine Arts Club, Cultural Society**
Presents
FINE ARTS
WORKSHOP and EXHIBITION

WORKSHOP

11th & 12th April 2022

Venue :- Student Activity Centre, 3rd floor, Block 45

(Limited Seats:- 20 only)

EXHIBITION

13th April 2022

Venue :- Lawn 4, Infront of Block 4

MENTORS

Dr. Nirupama Gupta,
Dean, Student's Welfare SU

Dr. Mohit Sahni, Associate Dean,
Student's Welfare SU



Register before 5th April 2022
(NO registration fee)

CONVENORS

Dr. Rachna Bansal, Fine art club coordinator
(rachna.bansal@sharda.ac.in)

Dr. Santhi Narayana, Diversity club coordinator
(santhi.narayanan@sharda.ac.in)

Student Coordinators :- Devpratap Tomar (7409536357), Divyanshi Kapoor (8595033900)

Fig 14 Exhibition_Fine arts workshop and exhibition



SCHOOL OF
**BUSINESS
STUDIES**

In collaboration with
**mon ami
foundation**

Invites all to

"SUKRITI-2.0"



Celebrating the Spirit of Women Entrepreneurship

An Exhibition to Showcase the Women Artisans Work

Thursday 21st October, 2021 | 10:00 AM - 01:30 PM

Venue: Reception Area, SBS, Block-7, Sharda University

Project Mentor

Dr. Mridul Dharwal

Project Incharge

Dr. Roopali Fulzele | Dr. Parul Saxena

Contact

roopali.fulzele@sharda.ac.in

parul.saxena@sharda.ac.in

Mobile- 9582425298

Fig 15 Exhibition_ Sukriti an exhibition to showcase women artisans work

11.2.4 Public access to green spaces

Provide free public access to open spaces and green spaces

Response: Occasional free access to all campus grounds

There is no restriction to access open and green spaces within the campus premise once one has entered in the campus. Typically, to enter the university premises, visitors, including students, faculty, staff, and guests, are required to follow the established protocols and procedures for access. Visitors are usually required to register at the entrance gate or security checkpoint. They may be asked to provide valid identification and state the purpose of their visit. Students and faculty members are issued identification cards that grant them entry to the premises.



Fig 16 Aerial view_Sharda University



Fig 17 Lawn in front of Block-4



Fig 18 Celebration Yoga Day in University Lawn



Fig 19 Celebrating North East Festival in campus lawn



Fig 20 Lawn in front of Block-2

11.2.5 Art and Heritage Contribution

Contribute to local arts, in terms of number of annual public performances of university choirs, theatre groups, orchestras etc... either ad-hoc or as part of an ongoing programme

Response: More than 30 performances

The University regularly hosts many inter and intra college fests and cultural events. While the intra college fests intend to explore the talents of the students within a particular school, the-inter college fests are organised inviting participation from various colleges in or near Delhi NCR.

Along with discovering and boosting various talents, these fests also implant the skills of event organisation and management in the students and help them develop qualities of effective leadership, team spirit and sportsmanship. Thus, Sharda University indeed focuses on enhancing the lives of our students and endorses both curricular and extracurricular activities. These cultural fests offer a spectrum of excitement and are skilfully customised by the faculty and student coordinators to challenge the 'intellect' and "aesthetics" of the participants.

Sharda university has multiple clubs contributing to the promotion and upliftment of culture, art and heritage. Following are the clubs at Sharda University -

Music Club - Music club beholds the aim of bringing together music enthusiasts in a common platform to enjoy and appreciate music regularly. Sharda University Music Club contributes to betterment of student's intellect, discipline, emotional quotient, identity, and personality student providing quality facilities like instruments dedicated music room and a plethora of events.



Fig 21 Music club performing at an event

Dance Club - The objective of the club is to elevate and advance the art of the dance in all its educational aspects and to encourage uniform methods of instructions. The club was established with the mission of bringing out the hidden talents of students and also provides them a stage where they can showcase their dancing talent and interest.

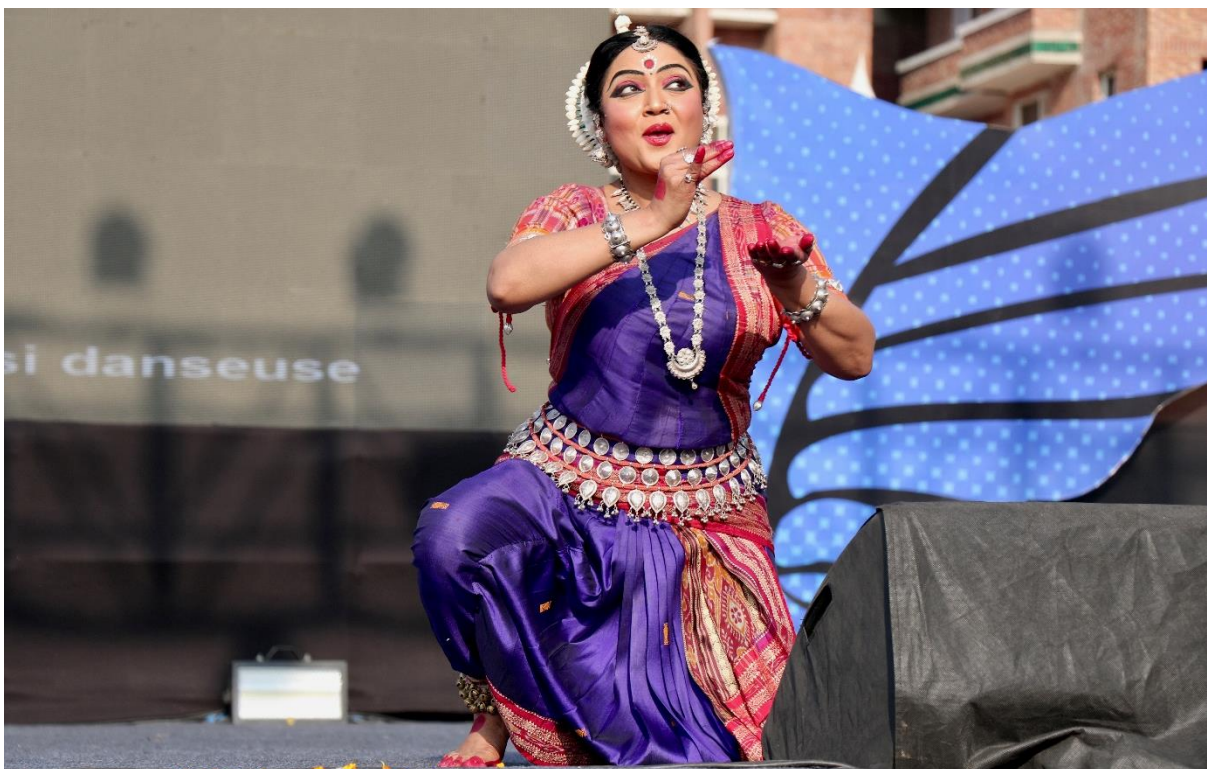


Fig 22 A performer from dance club

Dramatic Club - Drama club offers the chance for the students to pursue a career in the theatre or simply to learn some new skills to share with friends and family, network with others and share ideas with other students and faculty on and off campus.



Fig 23 Drama club performing Nukkad Natak

Fashion Club - The Fashion Club to express artistic freedom in the fashion world. This fashion Clubs will be a place to better yourself, network with others and share ideas with other students and faculty on campus. We will branch ourselves throughout the fashion community on and off campus. Members will gain up to date knowledge out of classes and in meetings. Doing this will help members grow, develop and express themselves in a mutual love for fashion.



Fig 24 Students of Fashion club during CHORUS the annual cultural fest

These clubs at Sharda University actively contribute to the preservation and promotion of art, culture, and heritage by organizing various public performances, workshops, and events both on and off-campus. Through their initiatives, they not only nurture the talents of the students but also instil a sense of cultural pride and awareness, thereby enriching the cultural fabric of the university and its surrounding community. Following is the list of such events during the academic year 2021-22 –

S.N O.	TITLE	DATE	PERMALINK
1	Fresher's orientation programme 2021	1 st Oct, 2021	http://shardaevents.com/event/freshers-orientation-program-2021/w
2	Cultural Mashup by Department of Student Welfare	9 th Apr, 2021	http://shardaevents.com/event/invitation-for-cultural-mashup-0n-9th-Apr-2021/
3	Fresher's Party at department of Life Sciences	26 th Nov, 2021	http://shardaevents.com/event/freshers-party/
4	AAGMANN- Orientation programme	4 th – 8 th Oct, 2021	http://shardaevents.com/event/aagmann-orientation-programme-from-Oct-4th-8th-oct21/
5	ORIENTATION PROGRAMME organized by School of Engineering and Technology (SET)	4 th – 6 th Oct, 2021	http://shardaevents.com/event/school-of-engineering-and-technology-set-is-organizing-an-orientation-programme-on-04-th-05-th-06-th-Oct-2021/
6	ORIENTATION PROGRAMME organized by School of Nursing Science & Research (SNSR)	18 th – 22 nd Oct, 2021	http://shardaevents.com/event/school-of-nursing-science-research-snsr-sharda-university-is-organizing-orientation-programme-for-the-new-session-of-2021-2022-from-18th-oct-to-22nd-oct-2021/
7	Orientation and Student Induction Programme for 16th B.D.S Batch, 2021-2022 - School of Dental Sciences	21 st – 26 th Feb, 2022	http://shardaevents.com/event/orientation-and-student-induction-programme-for-16th-b-d-s-batch-2021-2022-school-of-dental-sciences/
8	ORIENTATION PROGRAMME for Lateral Entry and Migration students by Sharda School of Engineering & Technology (SSET)	22 nd August, 2022	http://shardaevents.com/event/sharda-school-of-engineering-technology-sset-is-organizing-an-orientation-programme-for-lateral-entry-and-migration-students-on-22nd-august-2022/
9	Orientation Programme for New Students by Sharda School of Agricultural Sciences	13 th – 22 nd Sept, 2022	http://shardaevents.com/event/sharda-school-of-agricultural-sciences-is-organising-orientation-programme-for-new-students13-Sept-22-Sept-20221000-am-onwards/
10	Orientation and Student Induction Programme of the 17th BDS Batch 2022 - 2023 SDS	28 th – 30 th Nov, 2022	http://shardaevents.com/event/orientation-and-student-induction-programme-of-the-17th-bds-batch-2022-2023-sds-28th-to-30th-Nov-2022/
11	Farewell cum Freshers Department of Physics and Department of Environmental Studies, SBSR	13 th Apr, 2022	http://shardaevents.com/event/farewell-cum-freshers-department-of-physics-and-department-of-environmental-studies-sbsr-su/
12	FRESHER'S PARTY (ROSES & ROOKIES) FGT	18 th Nov, 2022	http://shardaevents.com/event/freshers-party-roses-rookies-fgt/

13	Celebration of Teacher's Day	6 th Sept, 2021	http://shardaevents.com/event/celebration-of-teachers-day/
14	School of Business Studies "DEEKSHARAMBH 2021"	4 th Oct, 2021	http://shardaevents.com/event/school-of-business-studies-deeksharambh-2021/
15	"Rhythm in Motion 2021" Group Dance competition	11 th Oct, 2021	http://shardaevents.com/event/rhythm-in-motion-2021-group-dance-competition/
16	School of Humanities & Social Sciences is organising "SHSS GOT TALENT-2021" A Pre-Fresher's Party Event	16 th Nov, 2021	http://shardaevents.com/event/school-of-humanities-social-sciences-is-organising-shss-got-talent-2021-a-pre-freshers-party-event/
17	School of Humanities and Social Sciences is organizing Fresher Party, "Fiesta de Novatos"	22 nd Nov, 2021	http://shardaevents.com/event/school-of-humanities-and-social-sciences-is-organizing-fresher-party-fiesta-de-novatos/
18	Republic Day Celebration	25 th Jan, 2022	http://shardaevents.com/event/republic-day-celebration/
19	The Holy Saraswati Puja	5 th Feb, 2022	http://shardaevents.com/event/the-holy-saraswati-puja/
20	Vasant Panchmi, "Goddess Saraswati Pooja"	5 th Feb, 2022	http://shardaevents.com/event/vasant-panchmi-goddess-saraswati-pooja/
21	Webinar on Learn Kathak Online	17 th Feb, 2022	http://shardaevents.com/event/webinar-on-learn-kathak-online/
22	Way to the Stage (Optimize Your Talent in Dance and Music)	20 th Nov, 2021	http://shardaevents.com/event/way-to-the-stage-optimize-your-talent-in-dance-and-music/
23	SANGAM - 2k21	25 th – 26 th Nov, 2021	http://shardaevents.com/event/sangam-2k21/
24	"Azadi Ka Amrit Mahotsav 2022"	7 th – 11 th Aug, 2022	http://shardaevents.com/event/azadi-ka-amrit-mahotsav-2022/
25	ALUMINI MEET- CONVERGE AGAIN- 22	11 th Oct, 2022	http://shardaevents.com/event/alumini-meet-converge-again-22/
26	Annual Media Fest "MEFT FEST 2022"	23 rd Nov – 24 th Nov	http://shardaevents.com/event/annual-media-fest-meft-fest-2022/
27	Cultural society along with student council under the adges of office of Dean Student welfare Sharda University is Organizing Navotsav '22 Freshers Party on 2nd Dec 2022	2 nd Dec – 3 rd Dec, 2022	http://shardaevents.com/event/cultural-society-along-with-student-council-under-the-edges-of-office-of-dean-student-welfare-sharda-university-is-organizing-navotsav-22-freshers-party-on-2nd-Dec-2022/
28	Fresher party	1 st Dec, 2022	http://shardaevents.com/event/fresher-party/
29	Cultural society along with student council under the aegis of office of Dean Student welfare Sharda University is Organizing Navotsav '22 Freshers Party	2 nd Dec, 2022	http://shardaevents.com/event/freshers-party-roses-rookies-fgt/
30	Navotsav '22 – Celebrity Night	3 rd Dec, 2022	http://shardaevents.com/event/navotsav-22-celebrity-night/
31	Freshers at SSDAP	3 rd Dec, 2022	http://shardaevents.com/event/school-of-design-architecture-and-planning-sap-department-of-architecture-sharda-university-is-organizing-a-freshers/

Evidence -

SHARDA UNIVERSITY
Beyond Boundaries

presents
SANGAM
2021

25th-26th November 2021

Fine Arts Dance Dramatics Literary

Student Activity Center, Sharda University

रंग जिंदगी के Colours of Life

NATANA WAR
A Group Dance Competition

NUKKAD NATAK
Parivarik Rishton ki Ehamiyat
परिवारिक रिश्तों का महत्व
MONOLOGUE ACT
Kuch Ankahi Daastan- कुछ अनकही दास्तां

CLASH OF TITANS
A Debate Competition
JUST A MINUTE
Speak for 1 minute

Colours of Life	FACULTY COORDINATOR Dr. Rachna Bansal, Fine Arts Club Coordinator	STUDENT COORDINATORS Devpratap Tomar, 7409536357 Divyanshi Kapoor Deepanshu, 7428068653 Jitendra Yadav, 9670377348 Aastha Pandey
Natana War	FACULTY COORDINATOR Dr. Venus Dillu, Dance Club Coordinator Dr. Nimmi Agarwal, Dance Club Coordinator	STUDENT COORDINATORS Altaf Siddiqui, 7701870973 Anubhav Awasthi, 7983139428 Kanika Joshi
Nukkad Natak Monologue Act	FACULTY COORDINATOR Mrs. Yashodhara Raj (Dramatics Club Coordinator)	STUDENT COORDINATORS Nidhi Gupta Sushant Jain, 8860975996
Clash Of Titans Just A Minute	FACULTY COORDINATOR Dr. Prachi Priyanka (Literary Club Coordinator)	STUDENT COORDINATORS Alisha Afrin Adil Shafi- 7889728052

Registration Link: <https://forms.gle/QJJeF3D7Z3eeaxg47>

ENTRY FEES: RS. 100/- FOR INDIVIDUAL EVENT
RS. 500/- FOR GROUP EVENT

Fig 25 Sangam 2021

SHARDA UNIVERSITY
Beyond Boundaries

MENTOR & MASCOT
INDIAN FILM FEDERATION
www.mmiiff.in

SHARDA TV

SHARDA UNIVERSITY
शारदा समाचार

Media & Mascot Entertainment Private Limited

SHARDA MEDIA TV

mango Digi tv

MEFT FEST

MEDIA, ENTERTAINMENT, FILMS AND TELEVISION 2022

The Annual Media Entertainment, Film And Television FEST 2022 of SSMFE, Sharda University in association with MMIFF

COMPETITIONS: Nukkad Natak, Dance, Mobile Photography, Short Story Writing, Open Mic, Rangoli, Kite Making, RJ Hunt, Mono Act, Face Painting

Scan QR

REGISTER NOW!
LIMITED SLOTS

DATE: 23rd- 24th, November, 2022
VENUE: Anand Swaroop Auditorium
Blk 45, Sharda University, Gr.Noida

SHARDA SCHOOL OF MEDIA, FILM AND ENTERTAINMENT

LAST DATE OF REGISTRATION
22, November, 2022

FACULTY COORDINATOR
Ms. Kiran Panchal: +91 99999 35806
DR. RANU TOMAR- +91 95897 41234
E-Mail: meftfest@gmail.com

STUDENT COORDINATOR
Mansi singh- 9120696724
Hemanth Nair: +91 9871117042
Kushagra Srivastava- 8851452652
E-Mail: meftfest@gmail.com

Fig 26 MEFT Fest, 2022



Sharda Skills



Sharda Skills is invite You to Join program on

LEARN KATHAK ONLINE

Webinar Date - 17th February, 4pm

Convenor



Mr. Dheeraj Sharma
Director, Sharda Skills

Facilitator and Host



Amit Khinchi
Kathak Exponent

Why Should I Learn !

- Personality Development with Beautiful Posture
- Improve Strength, Stamina & Health
- Body Balance with Swings & Strong Footwork Exercise
- Grace and Confidence with Natural Expression
- Cultural Awareness | Stress Buster

What Will I Learn: Laya, Taal, Technical aspect, Stuti, Bhajan, Vandana, Tarana, Practical & Theory Both

Program Coordinator - Mr. Amit Kedia | Sharda Skills | +91 9773607542

Fig 27 Poster_ Learning Kathak Online



*Dance club along with Student Council
Department of Students Welfare presents*

RHYTHM IN MOTION

***Group Dance Competition
Mode: Offline
Genre: Bollywood/ western/ Folk***



*We Await your presence on
October 11th, 2021 / 2:30 PM - 4:30 PM
Anand Swaroop*

***ID Card is Mandatory**

**For Queries
Contact:
Vikalp Pandey
(8979897989)
Altaf Siddique
(7701870973)**

Fig 28 Poster_Rythm to motion

Cultural Society of Sharda University

SHARDA UNIVERSITY
Beyond Boundaries

Department of STUDENTS' WELFARE

NSS

NCC

Student Council & Cultural Society along with NSS, NCC
Celebrating

75
आज़ादी का
अमृत महोत्सव

EVENTS	
Ethnic Day	10 August 2022
Poetry Competition	11 August 2022
Plantation Drive	12 August 2022
Free-the-Mann	13 August 2022
Documentary Display of Unsung Heroes	13 August 2022
Ek Deep Sahidon Ke Naam	14 August 2022
Cultural Celebration of Independence Day	15 August 2022
Freedom Rally	15 August 2022
Felicitation Ceremony	17 August 2022

11-17 August 2022 | Sharda University

Fig 29 Azadi ka Mahotsav

SHARDA UNIVERSITY
Beyond Boundaries

Orientation Programme 2021-22

04th - 06th October, 2021

School of Engineering and Technology,
Sharda University, India

Fig 30 Orientation Programme_SSET

SHARDA UNIVERSITY

SCHOOL OF ENGINEERING & TECHNOLOGY

CULTURAL SOCIETY
SET Sharda University

Presents

ROSES
AND
Hookies

FRESHER'S PARTY
FOR
SET FRESHERS

VENUE: ANAND SWAROOP AUDITORIUM
TIMINGS: 1 PM TO 5 PM
DATE: 18th NOVEMBER 2022

For registration

STUDENT CONVENER:
VIKALP PANDEY
(+91 89798 97989)

STUDENT COORDINATORS
ABHISHEK BHARDWAJ , SHREYA SINGH , LUV MISHRA , SHRUTI PATNAIK , HIMANSHU TIWARI

THEME: BLACK FOR BOYS AND RED FOR GIRLS

Fig 31 Freshers Party 2022

11.2.6 Record and preserve cultural heritage

Deliver projects to record and preserve intangible cultural heritage such as local folklore, traditions, language, and knowledge. This can include the heritage of displaced communities.

Response: Local or regional cultural heritage

National cultural heritage

Heritage of displaced communities

Sharda University has various initiatives that contribute to the recording and preservation of cultural heritage through events and research endeavours. Sharda University organizes cultural events and festivals that celebrate the diversity and richness of various cultures. These events often include performances, exhibitions, and workshops that highlight traditional art forms, music, dance, and literature. The university supports research projects focused on the documentation and preservation of cultural heritage. These projects involve studying local traditions, languages, rituals and historical sites. By conducting in-depth research, the university also contributes to the creation of comprehensive records in terms of research papers, publications and books.

Apart from the regular events and research work, Sharda University has its own inhouse FM radio called Suno Sharda. Greater Noida's only Community Radio "**Suno Sharda 90.8** " was launched on Dec 16, 2015. The station provides a platform for dialogue and discussion amongst the local community. The programme focuses on the daily life trends and empowers society by providing latest and up-to- date information. As radio station is located inside Sharda University, student from different streams also actively participate and contribute to various programmes for an enriching experience for the community while also promoting art, culture and heritage of not only the city but the nation as well. The content of the programmes is designed and developed by the students and community members themselves. The station encourages students and people from the nearby community to use multiple formats to produce radio programmes for the benefits of the society, thus making it more interactive.

Following is the list of some of the events organized during the academic year 2021-22 :

S.No.	Title of the Event	Date	Permalink
1	Poster Making Competition on 15th Aug 2021	15 th August, 2021	http://shardaevents.com/event/poster-making-competition-on-the-theme
2	Independence Day celebration : India of my Dreams	15 th August, 2021	http://shardaevents.com/event/independence-day-celebration-india-of-my-dreams/
3	Fine Art Event (A tribute to celebrate 75 years of Independence)	24 th Jan, 2022	http://shardaevents.com/event/fine-art-event-a-tribute-to-celebrate-75-years-of-independence/
4	School of Humanities; Social Sciences is organising Liberte Fest (Theme: Freedom)	24 th August, 2021	http://shardaevents.com/event/school-of-humanities-social-sciences-is-organising-liberte-fest-theme-freedom/
5	'Make your mask' contest, on the theme 'India in my dreams', celebrating 75th Independence Day.	14 th Aug – 20 th August, 2021	http://shardaevents.com/event/make-your-mask-contest-on-the-theme-india-in-my-dreams-celebrating-75-th-independence-day/
6	SMFE Presents International Webinar on 'Filmic Storytelling in Online Media Landscape!' by Dr. Vikrant Kishore -Deakin University, Australia	27 th August, 2021	http://shardaevents.com/event/smfe-presents-international-webinar-on-filmic-storytelling-in-online-media-landscape-by-dr-vikrant-kishore-deakin-university-australia/
7	School of Humanities & Social Sciences is organising an International Conference (Literature and Transdisciplinarity)	27 th August, 2021	http://shardaevents.com/event/school-of-humanities-social-sciences-is-organising-an-international-conference-literature-and-transdisciplinarity/
8	Modern, modernity, modernism: Indian Art A cultural walkthrough into the history of India	27 th August, 2021	http://shardaevents.com/event/celebration-of-teachers-day/
9	Site Visit to showcase the works by Architect Joseph Stein and Public Library SAP	17 th Sept, 2021	http://shardaevents.com/event/site-visit-to-showcase-the-works-by-architect-joseph-stein-and-public-library-sap/
10	Documentary Film Screening - The Dark Side of Chocolate	22 nd Sept, 2021	http://shardaevents.com/event/documentary-film-screening-the-dark-side-of-chocolate/
11	"One Week Onsite Training Programme on Skill Development of /Artisans"	04 th Oct – 09 th Oct, 2021	http://shardaevents.com/event/one-week-onsite-training-programme-on-skill-development-of-artisans/
12	"World Architecture Day" by SAP	04 th Oct, 2021	http://shardaevents.com/event/world-architecture-day-by-sap-4th-oct-2021/

13	International Day of Yoga 2022	20 th June, 2022	http://shardaevents.com/event/international-day-of-yoga-on-21st-june/
14	WEBINAR ON FRENCH LANGUAGE PROGRAMME SHARDA SKILLS	16 th Feb, 2021	http://shardaevents.com/event/webinar-on-french-language-programme-sharda-skills/
15	"Art Workshop & Exhibition" to celebrate World Art Day.	11 th – 13 th Apr, 2022	http://shardaevents.com/event/art-workshop-exhibition-on-11-12-and-13-Apr-2022-to-celebrate-world-art-day/
16	Webinar on SPANISH LANGUAGE PROGRAM Sharda Skills	6 th Oct, 2022	http://shardaevents.com/event/webinar-on-spanish-language-program-sharda-skills/
17	Webinar on German Language Program Sharda Skills	4 th Oct, 2022	http://shardaevents.com/event/webinar-on-german-language-program-sharda-skills-2/
18	Webinar on Learning English the Fun Way - It is No Rocket Science Sharda Skills	28 th Sept, 2022	http://shardaevents.com/event/webinar-on-learning-english-the-fun-way-it-is-no-rocket-science-sharda-skills/
19	"Hindi ka mahatva aur iski vaishvik upastithi" – Hindi Diwas celebration	21 st Sept, 2021	http://shardaevents.com/event/%e0%a4%b9%e0%a4%bf%e0%a4%82%e0%a4%a6%e0%a5%80-%e0%a4%95%e0%a4%be%e0%a4%ae%e0%a4%b9%e0%a4%a4%e0%a5%8d%e0%a4%b5-%e0%a4%94%e0%a4%b0-%e0%a4%87%e0%a4%b8%e0%a4%95%e0%a5%80-%e0%a4%b5%e0%a5%88%e0%a4%b6/
20	"Problems of Narratives in Indian History with Special Reference to Chauri-Chaura Uprising"	27 th Sept, 2021	http://shardaevents.com/event/problems-of-narratives-in-indian-history-with-special-reference-to-chauri-chaura-uprising/
21	Five-Day Online Workshop in collaboration with The Centre for Cultural Resources and Training (CCRT)	25 th – 29 th Oct, 2021	http://shardaevents.com/event/five-day-online-workshop-in-collaboration-with-the-centre-for-cultural-resources-and-training-ccrt/
22	Music Research and Composition	7 th May, 2021	http://shardaevents.com/event/name-of-the-program-music-research-and-composition/
23	WEBINAR on JAPANESE LANGUAGE PROGRAM Sharda Skills	24 th Jan, 2022	http://shardaevents.com/event/webinar-on-japanese-language-program-sharda-skills/

Following is the list of research papers and publications contributing in recording and preserving intangible heritage –

UID	Year	School	Department	Title of paper	Name of the author/s
SUEIN/2022/00143	2022-2023	School of Humanities & Social Sciences	Humanities & Social Sciences	Saeed Naqvi's The Muslim Vanishes As a Political Alleory: A Study	Rafraf Shakil
SUEIN03364	2022-2023	School of Humanities & Social Sciences	Humanities & Social Sciences	The Partition, women and oppression: A Study of in freedom's shade	Shreya Bhardwaj, Dr. Mukuta Borah
SUEIN03526	2022-2023	School of Humanities & Social Sciences	Humanities & Social Sciences	Partitioned Selves: A Critical Study of "PARMESHVAR SINGH" and "MERI MAA KAHAN"	Shreya Bhardwaj, Mukuta Borah
SUEIN04257	2022-2023	School of Humanities & Social Sciences	Humanities & Social Sciences	Magic Realism Mirror The Unconscious Self Estimation In The Select Novels Of Easterine Kire	Sonali Dudihalli , Pramod Kumar
SUEIN04272	2022-2023	School of Humanities & Social Sciences	Humanities & Social Sciences	Ambedkar's Annihilation of Caste: A Volte Face on the Socially Preserved Doctrine of Caste	Pallavi Thakur, Rafraf Shakil
SUEIN04537	2022-2023	School of Humanities & Social Sciences	Humanities & Social Sciences	Unveiling The Misuse of Religion/Spirituality: A Study of 'Pir Sain' (Religious Leader) in Tehmina Durrani's 'BlasphemyRANI'S 'BLASPHEMY	Mehak Fayaz & Rafraf Shakil Ansari
SUEIN02733	2021-2022	School of Humanities & Social Sciences	Humanities & Social Sciences	Gendering Migration: Evaluating Empowerment of Single Migrant Women	Nasreen Chowdhory, Sabur Ali M., Ramneet Kaur, Meghna Kajla, Namreeta Kumari, Bipin Tiwari, Saba Ishaq

SUEIN02836	2021-2022	School of Humanities & Social Sciences	Humanities & Social Sciences	Semantic Analysis of Direct Oral Complaints in Indian English: A Study in Gender Performance	Jyoti Jayal
SUEIN02891	2021-2022	School of Humanities & Social Sciences	Humanities & Social Sciences	Inner Consciousness: A voice of the Modern Indian English Poetry	Pramod Kumar, Gurpyari Bhatnagar
SUEIN03041	2021-2022	School of Humanities & Social Sciences	Humanities & Social Sciences	Sikhs: Hegemony, Power and Suppression in Khushwant Singh's A History of The Sikhs	Jasmeen Kaur, Mukuta Borah
SUEIN03042	2021-2022	School of Humanities & Social Sciences	Humanities & Social Sciences	The Subjugation of Muslim Women as 'other' in Qaisra Shahraz's The Holy Woman	Daniya Mumtaz, Jasmeen Kaur, Mukuta Borah
SUEIN03043	2021-2022	School of Humanities & Social Sciences	Humanities & Social Sciences	The Holocaust Event of Partition and Role of Culture in the works of Kartar Singh Duggal and Ranjit Powar	Jasmeen Kaur, Mukuta Borah
SUEIN03044	2021-2022	School of Humanities & Social Sciences	Humanities & Social Sciences	Identity Amid Partition: The Study Of A Time Of Madness: A Memoir Of Partition	Shreya Bhardwaj, Mukuta Borah
SUEIN03176	2021-2022	School of Humanities & Social Sciences	Humanities & Social Sciences	Amalgamation of east and west in the Art of Amrita Sher-gil	Prachi Priyanka
SUEIN03177	2021-2022	School of Humanities & Social Sciences	Humanities & Social Sciences	Ecofeminist Landscapes in Anita Desai's Cry, the Peacock and Where Shall We Go This Summer	Prachi Priyanka
SUEIN03339	2021-2022	School of Education	Education	Alternative Education In Kerala: Mitraniketam A Hub Of Life Long Experimental Education.	K Anvar, Harikrishnan M

SUEIN03518	2021-2022	School of Humanities & Social Sciences	Humanities & Social Sciences	Resistance, Repression and Mahasweta Devi's, 'Romtha'	Ritu Sharma and Kumar Gautam Anand
SUEIN03634	2021-2022	School of Humanities & Social Sciences	Humanities & Social Sciences	Women, Patriarchy and Islam: A Critique of Nawal El Saadawi's Woman at Point Zero	Rafraf Shakil
SUEIN00107	2020-2021	School of Humanities & Social Sciences	Humanities & Social Sciences	Impacts Of Historical Pandemics On India: Through The Lens Of 20Th Century Hindi Literature	Prachi Priyanka
SUEIN00109	2020-2021	School of Humanities & Social Sciences	Humanities & Social Sciences	Exploring Self: A Study Of Amrita Pritam's Autobiography "The Revenue Stamp"	Prachi Priyanka
SUEIN00110	2020-2021	School of Humanities & Social Sciences	Humanities & Social Sciences	Socio-Cultural Consciousness: Tradition V/S Modernity In Urban Middle Class	Pramod Kumar
SUEIN00111	2020-2021	School of Humanities & Social Sciences	Humanities & Social Sciences	Overland Trail Journals Of Pioneer Women: A Study Of The Quest For Self	Tapti Roy
SUEIN00112	2020-2021	School of Humanities & Social Sciences	Humanities & Social Sciences	Teaching English Conversation To Adults Through Playing Cards;A Ka:Rmik Language Teaching	Pramod Kumar
SUEIN00113	2020-2021	School of Humanities & Social Sciences	Humanities & Social Sciences	Locating Narrative Of Violence In Manohar Malgonkar'S ,A Bend In The Ganges	Pramod Kumar
SUEIN00114	2020-2021	School of Humanities & Social Sciences	Humanities & Social Sciences	Death As A Passage To Permanence: A Study Of Porphyria's Lover And A Musical Instrument	Tapti Roy
SUEIN00115	2020-2021	School of Humanities & Social Sciences	Humanities & Social Sciences	Belief Of Indian Population On Traditional Yoga System During Covid-19 Crisis	Sudhanshu Verma

SUEIN00118	2020-2021	School of Humanities & Social Sciences	Humanities & Social Sciences	Dalit Diaspora: Perspectives On Caste, Identity And Migration	Pratibha
SUEIN00121	2020-2021	School of Humanities & Social Sciences	Humanities & Social Sciences	Khaled Hoseini'S The Kite Runner: Unveiling The Trauma Od Adolescent Boys Trapped In Afghanistan'S Culturally Legitimised Paedophilia-'Bacha Bazi'	Pallavi Thakur
SUEIN00122	2020-2021	School of Humanities & Social Sciences	Humanities & Social Sciences	The Rise And Fall Of The Arakan Kingdom	Pallavi Thakur
SUEIN00123	2020-2021	School of Humanities & Social Sciences	Humanities & Social Sciences	Adaptation Of Egyptian Mythology And Rick Riordan's Kane Chronicles Trilogy	Gurpyari Bhatnagar and Rupinder Kaur
SUEIN00124	2020-2021	School of Humanities & Social Sciences	Humanities & Social Sciences	Assimilating Space And Gender In Namita Gokhale'S Paro: Dreams Of Passion	Pramod Kumar and Vijay Kailas Shiture
SUEIN00127	2020-2021	School of Humanities & Social Sciences	Humanities & Social Sciences	The Study Of Causality In Theravada Buddhism & Approach To Peace And Defilement Of Mind	Prachi Priyanka
SUEIN00257	2020-2021	School of Humanities & Social Sciences	Humanities & Social Sciences	Amish's "Ram Chandra" Series: Redefining Transcendent Sita Myth	Gurpyari Bhatnagar
SUEIN02102	2020-2021	School of Humanities & Social Sciences	Humanities & Social Sciences	Performing Bollywood Broadway: Shillong Chamber Choir as Bollywood's Other	Chatterjee S.

Evidence –



SHARDA UNIVERSITY
Beyond Boundaries

SCHOOL OF HUMANITIES & SOCIAL SCIENCES

हिन्दी का महत्व और इसकी वैश्विक उपस्थिति

CONVENERS
Dr. Sonal Pandey
Dr. Prachi Priyanka

STUDENT COORDINATORS
Taqwa Manzoor Bhat
Pankhuri

Guest Speaker:
Shri Rajendra Ranjan Chaturvedi
Noted Brajhasha litterateur

21st September, 2021 | 2:00 PM-3:00 PM

Registration Link: <https://forms.gle/YnqbRemyEkzbPwMy9>
<https://meet.google.com/aro-hywn-ijj>

Fig 32 Celebrating Hindi Day



SCHOOL OF EDUCATION

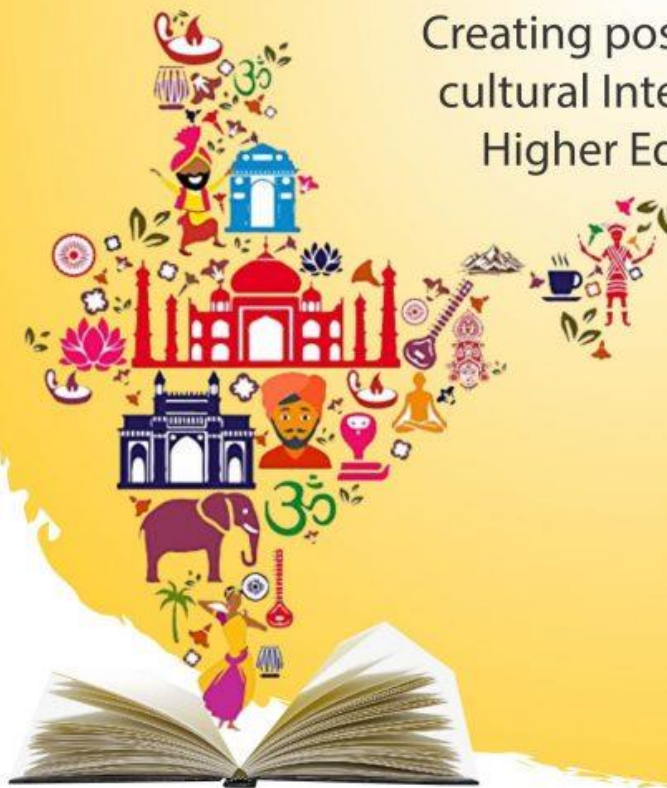


is organising a

Five-Day Online Workshop in collaboration with The Centre for Cultural Resources and Training (CCRT) an autonomous organization under the aegis of Ministry of Culture, Government of India

UNDERSTANDING INDIAN CULTURE THROUGH THE PRISM OF EDUCATION

Creating possibilities of cultural Integration in Higher Education



**October 25th
to
October 29th
2021**

ORGANIZER TEAM - CCRT

Course Convenor
Salony Priya, Consultant Training Innovations, CCRT

Course coordinator
Dr. Sandeep Sharma, Deputy Director Training, CCRT

SPONSORING AGENCY – SHARDA UNIVERSITY

Convenor
Prof. Arti Koul Kachroo, Dean, SOE, Sharda University

Co-Convenor
Dr. Akanksha Srivastava, Associate Professor, SOE, Sharda University

Organizing Secretaries:
Dr. Nishi Tyagi, Assistant Professor, SOE, SU
Dr. Disha Maheshwari, Assistant Professor, SOE, SU

Co ordinator:
Ms. Kritika Gosain, Assistant Professor, SOE, SU

Registration Link: <https://forms.gle/BVswHmxYh8ZadTQs9>

Fig 33 Poster_ Understanding Indian culture through the prism of education



The Department of History
School of Humanities & Social Sciences
organises webinar on

**PROBLEMS OF NARRATIVES IN INDIAN HISTORY WITH
SPECIAL REFERENCE TO CHAURI-CHAURA UPRISING**



Expert Speaker

DR. HIMANSHU CHATURVEDI

Ex-Head and Professor, Department of History,
Deen Dayal Upadhyay University, Gorakhpur

Patrons : Dr. Anubha Vashisht, Dean SHSS
Dr. Pramod Kumar, HoD SHSS
Coordinator : Dr. Nutan Tyagi, Professor SHSS
Conveners : Ms. Meenal Dharia, Assistant Professor
Dr. Diplina Saharia, Assistant Professor

27th September, 2021 | 10:30 AM

Google meet Joining Info :

Video call link: <https://meet.google.com/tyd-xabh-tpw>
Or dial: (US) +1 240-734-0311 PIN: 802 224 272#

Fig 34 Problems of narratives in Indian history with special reference to Chauri - Chaura uprising

Department of Art and Design, Sharda University
welcomes you to join us for



- A walk through the walls of : The National Gallery of Modern Art-

**MODERN, MODERNITY,
MODERNISM: INDIAN ART**



Venue : NGMA, New Delhi
Date ; 27 Aug 2021, 11 am - 4 pm

Fig 36 A walk through the walls of The National Gallery of Modern Art

11.3. Expenditure on arts and heritage

Sharda University provides various fundings to support its events and initiatives that contribute to the preservation and upliftment of art and heritage. These funding strategies are crucial in ensuring the successful execution of cultural events and programs aimed at promoting and preserving art and heritage.

11.3.1 Arts and Heritage expenditure

Response: University Expenditure

- RS 3,29,71,50348/-

University Expenditure on Art and Heritage

- RS 3,66,88,910/-

Some of the ways through which Sharda University funds its events and supports art and heritage preservation and upliftment include Pre Budget allocations, Grants and Scholarships. The university also collaborates with government bodies, non-profit organizations, and cultural institutions that have a vested interest in promoting and preserving art and heritage. Such collaborations often involve joint funding initiatives, where resources are pooled to support large-scale events, research projects, and preservation campaigns that have a broader impact on the community.

Evidence

PARTICULARS	SU	SUSET	SMFE	SMSR+HOSP	SUSBS	SUSAH	SUARCH	SUBSR	SUSDS	SUPHA	SUSLG	SUEDU	SUSNR	SU LAW	SUSAS	Total 2021-23	2021-22
Telephone Exp.	6,39,359	14,34,799	1,52,879	17,83,762	8,56,399	4,54,141	1,24,171	2,69,441	1,55,646	1,65,331	3,56,602	1,12,757	2,35,544	3,08,871	1,25,900	71,75,062	43,36,339
Training & Placement Exp.	0	3,90,718	24,009	28,871	1,34,470	71,308	19,497	42,307	24,439	25,960	35,993	17,705	70,325	1,11,498	19,769	12,67,065	79,522
Study Tours & Travelling Exp.	29,50,162	67,21,127	7,96,021	35,00,704	39,64,237	21,05,302	6,30,856	12,78,581	7,18,189	7,42,877	16,55,951	5,20,288	11,39,703	14,25,207	5,90,996	3,07,20,321	1,88,27,110
Visit And Affiliation Fees	-	10,32,158	34,844	61,62,756	1,95,188	3,13,907	1,28,301	61,410	7,36,974	9,81,682	81,276	25,699	4,15,545	70,397	28,695	1,02,70,832	1,23,74,746
Visit And Affiliation Exp.	4,08,132	9,64,343	1,35,464	12,14,424	5,48,854	3,02,799	1,43,274	1,78,667	1,01,731	1,14,050	2,27,646	71,981	1,77,422	2,02,976	80,372	48,72,155	1,55,070
Bus Charge Expense	2,23,99,551	-	-	22,765	-	-	-	1,434	-	-	-	-	-	-	-	2,24,23,750	57,42,141
Membership Fees	12,08,466	3,86,216	32,728	1,21,158	1,88,324	13,500	38,701	29,613	3,85,791	-	11,455	43,226	48,890	33,700	-	25,41,788	21,78,455
Staff Recruitment Exp.	74,341	1,74,374	17,776	26,08,584	1,02,578	52,806	14,438	33,154	18,097	19,224	41,464	13,111	38,131	35,914	16,639	32,38,631	34,32,719
Examination Exp.	3,83,865	29,79,986	2,96,721	50,25,330	19,49,542	13,71,468	6,18,083	7,76,763	10,41,702	4,29,778	5,41,340	3,16,906	13,67,898	4,46,344	3,35,448	1,78,83,094	1,54,34,208
Admission Cell & Promotion Exp.	53,29,405	2,29,31,957	24,55,184	1,39,53,404	1,45,31,187	65,03,932	16,80,811	41,09,466	20,53,879	23,99,667	60,78,368	16,22,571	35,19,411	40,44,526	17,56,729	9,29,69,897	4,72,85,215
Research & Development Exp.	58,48,970	64,20,820	10,75,283	43,981	68,97,064	52,90,262	8,32,165	1,29,36,178	56	4,08,060	48,91,799	4,40,912	27,668	13,42,232	9,39,265	4,73,95,215	3,71,51,530
Insurance of students	-	6,87,856	73,938	1,81,332	4,14,186	2,19,639	60,054	1,30,311	75,276	79,960	54,533	1,13,918	1,49,381	60,890	24,73,740	44,81,104	
Software Maintenance Exps.	30,53,794	76,78,184	12,27,512	39,27,723	43,45,328	21,69,127	5,93,082	12,88,472	8,08,317	7,89,675	17,76,985	5,38,565	11,25,038	14,75,271	6,01,342	3,33,98,417	3,65,37,532
Rebate & Discount	-	-	-	13,09,466	-	-	-	-	-	-	-	-	-	-	-	13,09,466	7,20,509
Parking Expenses	-	-	-	17,84,089	-	-	-	-	-	-	-	-	-	-	-	17,84,089	-
Medical Camp Expenses	-	-	-	61,84,255	-	-	-	-	5,17,855	-	-	-	-	-	-	67,02,110	-
Water Exp.	18,40,921	6,75,203	2,41,692	46,16,836	4,61,891	2,48,258	1,89,681	44,546	7,30,962	1,10,337	23,875	27,584	1,65,505	1,89,997	33,244	96,01,332	-
GNIDA Lease Exp	18,28,658	6,70,705	2,40,082	29,91,253	4,58,814	2,46,604	1,88,418	44,250	7,26,093	1,09,402	23,716	27,400	1,64,403	1,89,725	33,022	79,42,745	79,42,746
Advertisement & Publicity Expenses	4,63,140	7,27,25,891	78,50,712	2,05,26,937	4,86,94,637	1,79,60,404	42,97,251	1,22,19,261	49,93,812	67,07,215	2,02,98,456	44,86,544	1,02,86,216	98,01,534	46,54,798	24,59,66,809	19,19,29,301
SUB-TOTAL	15,68,06,914	28,46,01,084	3,83,73,378	67,15,59,221	17,40,07,031	8,16,98,437	2,91,90,318	6,60,08,140	5,84,17,351	2,29,39,423	6,48,87,747	1,52,16,968	3,41,64,848	4,69,17,818	1,70,74,223	1,76,18,622	1,41,83,20,665
TOTAL EXPENSES	20,49,24,637	53,32,48,280	6,96,26,689	1,82,40,31,272	30,96,72,879	14,68,08,689	7,08,12,642	15,21,46,535	15,77,64,789	5,00,73,703	11,04,58,096	3,46,27,349	7,88,80,249	9,22,97,414	3,92,97,433	3,87,66,70,594	3,29,71,50,348
Surplus Before Depreciation	54,83,78,799	24,37,68,638	39,60,346	15,78,46,273	21,87,48,028	6,78,13,268	48,14,437	(2,88,16,869)	50,62,822	3,36,00,805	2,11,00,783	(19,94,301)	1,82,74,405	6,00,69,094	(1,92,42,957)	1,33,33,82,570	1,21,63,70,719
Depreciation	5,38,32,838	3,17,67,679	1,07,03,577	20,83,58,290	1,51,79,263	94,26,209	69,27,359	72,89,918	2,63,01,009	48,81,988	13,97,762	12,74,135	55,99,851	67,70,204	16,14,538	39,12,94,820	39,55,54,372
Surplus/(Deficit) of Incomes over Expenditure	49,45,35,961	21,20,00,959	(67,43,431)	(5,05,12,017)	20,35,68,765	5,83,87,059	(21,13,122)	(3,61,06,787)	(2,12,38,187)	2,87,18,817	1,97,03,021	(32,68,436)	1,26,74,554	5,32,98,890	(2,08,57,495)	94,20,87,751	82,08,16,347



(Handwritten signature)

Fig 37 Overall university expenditure

PARTICULARS	SU	SUSET	SMFE	SMFR-HOSP	SUSIS	SUSAH	SUARCH	SUSBR	SUSDS	SUPHA	SUSIG	SUEDU	SUSNR	SU LAW	SUSAS	Total 2022-23	2021-22
FINANCIAL EXPENSES - (SCLN)																	
Bank Charges	8,13,958	2,98,539	1,06,864	20,40,222	2,04,224	1,09,767	83,867	19,696	3,62,545	48,797	10,556	12,196	73,778	84,149	14,699	42,83,558	43,48,034
Interest on term loans from banks and others (secured)	1,63,22,608	59,86,716	21,42,975	2,91,36,855	40,95,376	22,01,190	16,81,816	3,94,974	64,81,110	9,28,307	2,11,686	2,44,576	14,67,461	16,93,485	2,94,755	733,91,900	10,82,27,617
Interest on Vehicle & Equipment Loan (secured)	2,45,563	5,46,255	58,717	15,52,473	3,28,922	1,74,424	47,691	1,03,486	59,790	63,500	1,36,963	43,307	90,167	1,18,630	48,355	36,18,533	19,27,030
Interest to Others	26,817	60,600	6,413	72,605	35,953	19,048	5,209	11,302	6,528	6,935	15,446	4,730	9,880	12,955	5,281	2,99,702	4,44,068
Interest on Unsecured Loan	18,68,212	41,55,850	4,46,713	29,63,772	25,02,434	13,27,001	3,62,828	7,87,307	4,54,799	4,83,098	10,41,994	3,29,477	6,88,263	9,02,523	3,67,882	1,86,82,123	1,67,83,948
SUB-TOTAL	1,92,77,158	1,10,47,960	27,61,682	3,58,25,928	71,66,879	38,31,430	21,81,411	13,16,788	73,64,762	15,80,637	14,16,645	6,34,286	23,29,249	20,15,042	7,30,972	10,02,77,806	13,22,30,696
OTHER EXPENSES - (SCL-F)																	
Audit Fees & Out of pocket expenses	1,77,080	3,93,915	42,342	2,80,924	2,37,192	1,25,780	34,391	74,626	43,108	45,791	98,766	31,230	65,237	85,546	34,870	17,70,798	17,13,912
Property, Plant & Equipment Insurance Exp.	14,08,362	8,81,642	2,06,093	23,39,895	5,67,290	3,03,016	1,63,030	1,12,144	5,36,610	1,23,451	1,25,328	52,817	1,81,349	2,20,669	60,382	72,82,278	67,05,685
Charity & Donation	6,10,100	-	-	4,17,309	-	-	-	-	-	-	-	-	-	-	-	10,27,409	17,25,300
Conveyance Exp.	5,01,411	29,36,633	8,46,594	47,90,477	18,03,997	12,12,598	5,05,879	16,45,592	5,31,459	3,11,151	2,79,662	88,428	2,11,816	783,556	4,95,816	1,69,45,069	1,49,84,891
Diesel & Petrol Exp (Vehicle)	5,80,656	12,97,773	1,30,842	99,17,198	7,77,768	4,32,443	1,32,770	2,44,702	1,42,855	1,50,151	3,23,861	1,02,404	2,33,918	2,80,512	1,14,311	1,49,94,194	85,22,533
Electricity Exp.	2,80,90,608	1,03,02,917	36,87,981	7,05,27,575	70,47,990	37,88,168	28,94,342	6,70,735	1,11,53,751	16,83,630	3,64,303	4,20,908	25,25,446	29,14,427	5,07,263	14,65,89,044	13,65,88,195
Function & Festival Exp.	1,00,89,841	66,46,369	9,01,857	58,60,777	39,90,764	21,04,894	6,28,511	13,48,448	7,65,500	7,65,056	16,64,240	5,95,792	12,12,977	14,95,803	5,82,595	3,86,23,804	3,56,88,910
Meeting Exp.	2,42,490	17,90,830	1,00,059	10,36,446	5,05,758	2,37,012	1,33,439	2,82,606	90,789	98,654	1,87,743	68,989	1,39,704	2,79,673	79,140	52,33,422	25,30,478
Webinar Exp.	676	1,504	162	1,073	906	480	131	285	165	175	377	119	249	327	133	6,762	1,38,292
Conference Exp.	44,248	20,08,730	10,610	7,31,154	5,41,784	3,44,832	8,017	82,680	21,597	1,05,579	26,922	7,826	88,928	46,989	52,738	41,23,234	12,30,415
Invited Talk Exp.	1,437	21,861	344	4,280	3,605	1,021	279	4,886	8,427	372	1,041	253	1,549	39,454	4,518	92,847	72,252
Workshop Exp.	9,958	1,06,302	5,381	15,796	58,105	26,930	97,894	14,332	2,55,800	2,575	5,254	13,226	9,819	4,81,602	1,961	11,64,900	4,43,885
Cultural Event Exp.	1,82,145	4,05,184	63,596	2,88,959	2,47,377	1,29,379	35,375	76,760	99,252	47,101	1,01,992	32,123	61,104	93,754	35,867	18,65,308	1,07,022
Seminar Exp.	1,467	5,312	15,104	2,329	9,716	20,825	285	618	357	379	819	259	5,166	2,57,891	289	3,31,116	3,13,579
MDP Exp.	-	-	-	13,440	50,884	-	-	-	-	-	-	-	-	-	-	-	81,727
Training Program Exp.	60,781	-	-	1,64,734	2,97,254	1,51,192	41,886	94,839	69,891	55,770	1,71,390	38,036	79,455	1,04,190	42,469	17,70,909	14,45,249
Games & Sports Exp.	-	4,79,762	51,570	1,41,205	2,97,254	1,51,192	41,886	94,839	69,891	55,770	1,71,390	38,036	79,455	1,04,190	42,469	17,70,909	14,45,249
Generator Diesel & Rent Exp.	31,05,576	18,72,994	6,20,305	1,27,93,039	12,80,999	6,88,514	5,26,058	1,23,541	20,27,237	3,06,006	66,213	76,502	4,59,009	5,28,708	92,197	2,56,17,501	1,95,76,386
Cloth & Uniform Exp.	13,58,595	-	-	1,34,00,762	-	1,05,240	-	-	-	50,505	-	-	-	-	-	1,49,15,122	70,23,105
Hostel Exp.	1,18,91,666	-	-	1,04,94,383	-	-	-	-	-	-	-	-	-	-	-	2,23,86,049	43,81,499
Horticulture And Plantation Exp.	33,34,691	12,23,080	4,37,808	1,01,29,109	8,36,681	4,49,701	3,43,393	80,693	13,24,084	1,99,867	43,247	49,967	2,99,801	3,45,977	5,85,525	1,06,83,826	76,64,780
Medical Programme Exp.	-	-	-	13,21,58,986	-	-	-	-	52,57,494	-	-	-	-	2,688	-	13,74,19,168	21,32,22,381
Interest Exp.	1,00,640	2,30,990	24,899	1,64,734	1,39,090	73,798	20,167	43,781	25,279	26,852	37,917	18,313	38,255	50,165	20,448	10,38,491	1,05,903
Journal & Subscription Exps.	-	37,46,861	5,26,491	23,90,289	8,28,206	8,15,665	1,87,107	40,88,704	6,68,662	3,06,486	1,126,774	6,31,717	11,97,595	10,71,537	2,98,579	1,80,84,123	2,08,36,307
Lab & Workshop Exp.	16,035	18,12,500	97,136	5,09,16,153	49,383	5,54,873	1,16,478	14,72,855	8,57,562	4,49,482	1,31,613	2,78,282	1,66,831	34,604	4,32,034	5,73,85,754	5,09,16,344
Legal Aid Exp.	1,52,381	3,50,096	37,632	5,32,948	2,10,807	1,11,789	30,565	66,324	40,697	82,779	27,756	37,980	77,030	30,991	18,38,088	66,57,330	60,67,330
Library Exp.	23,200	51,610	5,548	42,017	31,078	16,479	4,506	9,777	5,618	5,999	12,940	4,092	8,547	11,208	4,569	2,37,216	1,97,716
Meal & Diet to Patient	-	-	-	4,37,28,216	-	-	-	-	-	-	-	-	-	-	-	4,37,28,216	2,38,40,428
Office & Misc. Exp.	1,01,454	3,17,617	43,278	11,39,721	2,08,280	81,843	48,814	62,645	43,479	70,887	86,630	19,831	47,741	30,212	29,707	23,37,133	17,42,923
Rent	7,89,718	18,23,087	1,88,832	29,98,879	10,67,400	5,76,273	1,65,173	3,01,139	1,98,119	2,02,211	4,50,065	1,39,275	3,12,297	3,97,612	1,07,309	98,70,402	1,04,64,349
Postage And Courier Exp.	20,730	46,113	4,957	49,023	27,267	14,724	4,026	8,736	5,046	5,360	10,164	17,446	10,014	4,332	2,78,662	2,49,414	
Consultancy Charges Paid	15,19,171	36,90,000	5,92,381	35,20,473	35,83,872	10,87,238	3,02,353	8,46,835	4,34,755	3,92,154	8,74,787	2,00,760	5,88,712	7,32,593	2,98,532	2,26,73,639	2,09,37,749
Repairs And Maint. Furniture	34,02,935	22,78,604	7,09,624	1,61,97,618	14,10,607	7,28,615	1,17,237	3,47,933	3,254,344	3,26,829	84,780	4,86,451	3,60,560	1,26,477	3,31,02,704	1,52,30,375	
Repairs And Maint. Building	2,77,36,720	1,04,13,200	36,41,736	10,23,73,572	6,961,384	37,53,413	29,14,369	7,29,199	1,17,77,483	1,663,882	3,60,806	4,15,929	29,71,606	28,78,741	3,54,998	17,91,49,037	15,30,35,663
Repairs And Maint. Computer	4,23,664	3,05,330	99,024	29,87,801	1,20,340	57,134	45,069	34,529	2,31,941	61,265	5,494	8,001	39,275	33,158	45,015	24,72,626	24,72,626
Repairs And Maint. Equipments	69,50,429	50,21,782	10,45,312	5,66,83,000	26,53,511	13,96,883	8,31,102	6,98,625	32,83,199	5,63,032	5,09,357	2,23,488	8,51,392	16,11,644	3,05,162	8,20,17,093	6,20,38,890
Stationary & Printing Exp.	10,49,937	37,01,733	5,02,394	1,53,89,400	17,63,387	9,70,760	2,66,626	13,41,629	11,33,790	5,13,592	7,02,424	3,35,520	8,35,666	16,45,643	3,37,983	2,97,14,294	1,38,80,120
Scholarship to Students th. University	1,854	7,58,94,487	43,66,438	87,13,538	4,52,11,924	2,17,22,439	66,18,054	1,30,61,874	451	6,54,455	1,83,55,053	18,66,359	11,49,025	93,62,068	19,64,144	20,89,41,162	14,80,53,881
Student Welfare Exp.	-	3,93,164	31,369	1,39,854	2,14,438	93,185	25,479	1,15,952	51,647	37,924	74,251	29,273	48,652	85,207	29,784	13,70,179	10,99,852
Career Counselling Exp.	23,47,906	52,22,931	5,61,414	37,24,768	31,44,936	16,67,732	4,35,990	9,89,461	5,73,735	6,07,140	13,09,543	4,14,074	6,64,983	11,34,260	4,62,341	2,34,79,054	1,16,64,446
Books for Students Exp.	-	1,27,65,875	41,39,329	19,11,570	23,24,124	5,17,676	9,43,919	33,62,596	3,78,952	-	9,89,000	5,29,884	55,945	5,37,880	-	2,84,36,753	2,56,45,237
Synergy Waste Exp.	41,300	91,872	9,875	5,77,895	35,320	29,336	8,021	24,485	10,054	10,680	23,005	7,284	15,213	-	-	19,92,457	12,19,600



Signature

Fig 38 University expenditure on Art and Heritage

11.4 Sustainable Practices

The University has a focused approach for sustainable green practices on the campus, geared towards implementing environmentally conscious activities, having spin-off short- and long-term financial benefits. The University has adopted a conscious policy to introduce and evolve green practices to:

- Minimize soil, air, water and noise pollution through eco-friendly practices of natural resource conservation and to reduce human carbon footprints;
- Promote adoption and evolution of practices for environmental protection and direct social development for ensuring conditions for quality human life and health, apart from conservation of biological diversity and natural resources;
- Integrate credit-based courses/programmes, training, etc. in environmental sciences so that the University, as an agent of social change, could impact local and global environment;
- Ensure environment friendly infrastructure development, resource management and green buildings.

11.4.1 Sustainable practices targets

Measure and set targets for more sustainable commuting (walking, cycling or other non-motorized transport, vanpools, carpools, shuttlebus or public transportation, motorcycle, scooter or moped, or electric vehicles)

Response: Yes

Sharda University, in line with global sustainability goals and to promote eco-friendly commuting options, has set some goals and targets through implementing certain directives, promotions, enhanced infrastructure, community participation etc. Following is the list of targets that Sharda university aims to achieve in the near future

1. Enhancing Infrastructure for Non-Motorized Transport: In addition to the already existing pedestrian walkways and pedestrian friendly traffic in the campus, the university is planning to add dedicated bike lanes and secure parking facilities for bicycles and scooters to encourage more students and faculty to opt for non-motorized transportation.
2. Promotion of Electric Vehicles (EVs): Sharda university has set a target for increasing the number of inhouse electric vehicles, planning for charging stations on campus and encouraging the use of electric cars, scooters, and bicycles.
3. Electrification of existing Shuttle Bus Service: Sharda university has a shuttle bus service that connects the campus with nearby residential areas and public transportation hubs, reducing the need for private vehicles and promoting the use of public transport among students, faculty, and staff. The university is in process of replacing all the diesel operated buses with E-Buses.
4. Encouraging Carpooling and Vanpooling: Sharda university is planning to Introduce incentive programs for carpooling and vanpooling, such as designated parking spaces for shared vehicles, reduced parking fees, or other benefits to encourage more people to share rides and reduce the overall number of vehicles commuting to the university.

5. Partnerships with Public Transportation Authorities: The university is proposing collaboration with local public transportation authority to improve the frequency and accessibility of public transport options connecting the university to different parts of the city or region, encouraging more students and faculty to use public transportation for their daily commute.

Also, to make sure the effective implementation of these strategies the university will establish a department for monitoring and reporting the achieved targets for sustainable development goals. By setting and achieving these targets, Sharda University aims to contribute to a more sustainable and eco-friendly campus environment while also promoting the adoption of sustainable commuting practices among its students, faculty, and staff.

EVIDENCE –

Point 29: Green Practices for Commuting: The university shall continuously endeavour to adopt green practices in terms of transport and commuting like focusing on non-motorised transport, facilitating Electric Vehicles, usage of e-buses/CNG buses that are environment friendly, encouraging carpool and in the longer run focusing on collaborations with bus authorities for bus services.

Figure 39 Screenshot from the university policy on Environment and Energy usage/2022 version

11.4.2 Promote sustainable commuting

Undertake actions to promote more sustainable commuting

Response: Yes

Sharda University demonstrates its commitment to sustainability and encourages its students, faculty, and staff to adopt more eco-friendly commuting practices, thereby contributing to a greener and more environmentally conscious campus community. The university has a dedicated shuttle service for students, faculty and staff thereby reducing the overall carbon footprint because of commuting. University also promotes researches related to sustainable commuting which has resulted in at least two researches namely- **Analysis of pedestrian behaviour due to faulty acts near metro station, Pari chowk Greater Noida and Cycleway as an alternative way in Knowledge**. Following are the details of the University shuttle services and the number of beneficiaries for the same –

S.No.	University Transport Details	Count
1.	University owned Buses	08
2.	Hired Buses	24
3.	Tempo Travelers	05
4.	Cars	15
5.	Ambulances	10
6.	Golf Cart	02
7.	Total Driver + Helper	43

Average Faculty and staff running in bus per month - 90

No. of Students - 595

Apart from these daily shuttle bus services, the university also facilitates its students and staff by providing them shuttle buses/cars for any outstation visits or site visits etc.

On an average about **110 student trips** are organized per month by the university with daily on call services for the Sharda School of Medical Sciences and Research. The university also has established an E-bike rental and charging point in collaboration with **ZOGO**.

Below are the details of the vehicles owned by Sharda University, which are used for different purpose

Sr. no.	Vehicle	Registration no.	Fuel Type	User
1	Ertiga	UP16CM8616	Diesel	Staff Usage
2	Ertiga	UP16CM8617	Diesel	Staff Usage
3	Ertiga	UP16BH3207	Diesel	Staff Usage
4	Ertiga	UP16CD1983	Diesel	Staff Usage
5	Ertiga	UP16CD2065	Diesel	Staff Usage
6	Ertiga	UP16CH4093	Diesel	Staff Usage
7	Desire	UP16CB4428	Diesel	Staff Usage
8	Desire	UP16CL7725	Diesel	Staff Usage
9	Eco	UP16BF1620	Petrol	Staff Usage
10	Liva	UP16BJ0337	Diesel	Staff Usage
11	Honda City	UP16CR8669	Diesel	Staff Usage
12	KIA	UP16CQ7308	Diesel	Staff Usage
13	Maruti Alto	UP16CH6974	Petrol	Staff Usage
14	BUS	UP16CT9842	CNG	SU/SH - Students
15	BUS	UP16CT9843	CNG	SU/SH - Students
16	BUS	UP16ET6465	CNG	SU/SH - Students
17	BUS	UP16ET6466	CNG	SU/SH - Students
18	BUS	UP16ET6467	CNG	SU/SH - Students
19	BUS	UP16ET6468	CNG	SU/SH - Students

20	BUS	UP16ET6469	CNG	SU/SH - Students
21	Force Tempo Traveller	UP16ET9301	CNG	University Carriage
22	Force Tempo Traveller	UP16DT1982	CNG	University Carriage
23	Force Tempo Traveller	UP16ET0173	CNG	University Carriage
24	Force Tempo Traveller	UP16ET0174	CNG	University Carriage
25	Force Tempo Traveller	UP16ET0175	CNG	University Carriage
26	Eco	UP16CU8624	CNG	University Carriage
27	Eco	UP16CU8626	CNG	University Carriage
28	Dental Van	UP17D1887	Diesel	University Carriage
29	ICCU Ambulance	UP16FT1293	Diesel	Ambulance
30	Mammography Ambu.	UP16GT4044	Diesel/Petrol	Ambulance
31	Eco. Ambulance	UP16BT1549	Petrol	Ambulance
32	Eco. Ambulance	UP16BT1978	Petrol	Ambulance
33	Eco. Ambulance	UP16BT8805	Petrol	Ambulance
34	Eco. Ambulance	UP16BT8806	Petrol	Ambulance
35	Eco. Ambulance	UP16DT2170	Petrol	Ambulance
36	Eco. Ambulance	UP16DT4821	Petrol	Ambulance
37	Eco. Ambulance	UP16DT4784	Petrol	Ambulance
38	e-Cart	-	Electric	Divyangjan/Aspirants Students
39	e-Cart	-	Electric	Divyangjan/Aspirants Students

The pictures of Bus, ZOGO charging point and E cart are attached below-



Fig 40 EV_ On campus Golf Cart at Sharda University



Fig 41 ZOGO_ E charging and renting station at Sharda University



Fig 42 Sharda University shuttle bus service

11.4.3 Allow remote working

Promote or allow telecommuting or remote working for employees as a matter of policy or standard practice, or offer a condensed working week to reduce employee commuting

Response: Only in some circumstances

At present, the university does not allow for remote working. Although, during the COVID-19 pandemic faculty and staff were working remotely and students were benefitting through online mode. Being an educational institute, the university thrives on physical presence and interaction between students and faculties, but also because of previous experiences the university is fully organized and capable to run an online as well as hybrid system of lectures.

The university is also targeting to allow remote working for some departments who are not directly involved in teaching and learning activities.

11.4.4 Affordable housing for employees

Provide affordable housing for employees

Response: Yes

The university has not only distinguished itself as a prominent educational institution but also as a pioneer in employee welfare. Recognizing the importance of providing stable housing for its workforce, the university has embarked on a groundbreaking initiative to offer affordable housing solutions for its employees. The university's management, in close collaboration with renowned architectural firms and housing experts, has devised a comprehensive plan that prioritizes accessibility and affordability without compromising on quality. With a strong commitment to fostering a supportive and nurturing work environment, Sharda University has constructed a state-of-the-art residential complex within the campus, ensuring convenience and a sense of community for its staff members. In addition to the on campus housing, the university gives House Rent Allowances to the university staff not availing the university housing.

Sharda university provides affordable on-campus housing for the employees. Following are the details of employee residences at the university –

New Staff Quarter Block-27	Number of Quarters	Number of residents/Staff/family
1 BHK	0	0
2 BHK	14	29
3 BHK	18	46
Total	32	75
Old Staff Quarter Block-23	Number of Quarters	Number of residents/Staff/family
1 BHK	24	24
2 BHK	24	35
3 BHK	12	39
Total	60	98

Nursing Quarter Block-42	Number of Quarters/Rooms	Number of residents/Staff/family
Floor - 2nd	301	4
	302	6
	303	4
	304	6
	306	6
	307	4
	308	5
	309	4
	310	4
	312	4
	313	4
	314	4
Total	12	55
Floor - 3rd	401	6
	402	6
	403	6
	404	5
	406	6
	407	7

	408	3
	409	4
	411	3
	412	4
	413	4
	414	3
Total	12	57
	501	0
	502	0
	503	4
	504	1
	506	0
	507	1
	508	2
	509	2
	510	0
	511	0
	512	2
	513	0
	514	1
Total	13	13

4.4.5 Quorum:

With the presence of 75% of members in a Selection Committee, it shall be considered that the Selection Committee was duly constituted.

4.5 COMPENSATION, ALLOWANCES AND INCREMENTS:**4.5.1 Pay Fixation**

The University, shall adopt a suitable pay fixation formula (including the allowances) keeping in view its financial commitments and the recommendations of the Pay Commission, from time to time.

However, in order to promote global standards of education and talent diversity, the pay package to the candidates with exceptional merit (for example: Ivy League qualification / teaching experience, international academic / research credentials), may be benchmarked with international compensation packages.

4.5.2 Pay Scale and Allowances

- (i) An employee holding a regular post substantively shall be placed in the appropriate scale of pay as prescribed by the university, from time to time.
- (ii) On substantive appointment, the initial basic pay in the scale shall be fixed at the minimum of the scale;

provided that the appointing authority may, on the recommendation of the Selection Committee, grant higher initial pay in the scale, as a special case.

- (iii) On appointment to a post involving higher duties and responsibilities, the basic pay of the higher scale may be fixed at a stage next above the notional pay arrived at, after adding one increment to the basic pay in the lower scale.
- (iv) In addition to the basic pay, an employee may be allowed to draw the following allowances:
 - a) 'Dearness Allowance' at the rates and subject to such conditions as the university may prescribe from time to time.
 - b) 'House Rent Allowance' at the rates as may be prescribed by the University from time to time.
 - c) 'Conveyance Allowance' wherever especially provided for in the appointment order.
 - d) 'Officiating Allowance' to the teaching staff for additional and substantial administrative responsibility discharged in accordance with the notification issued from time to time. A copy of the existing notification is at **Annexure-3**.

New Staff Quarters, Block 27

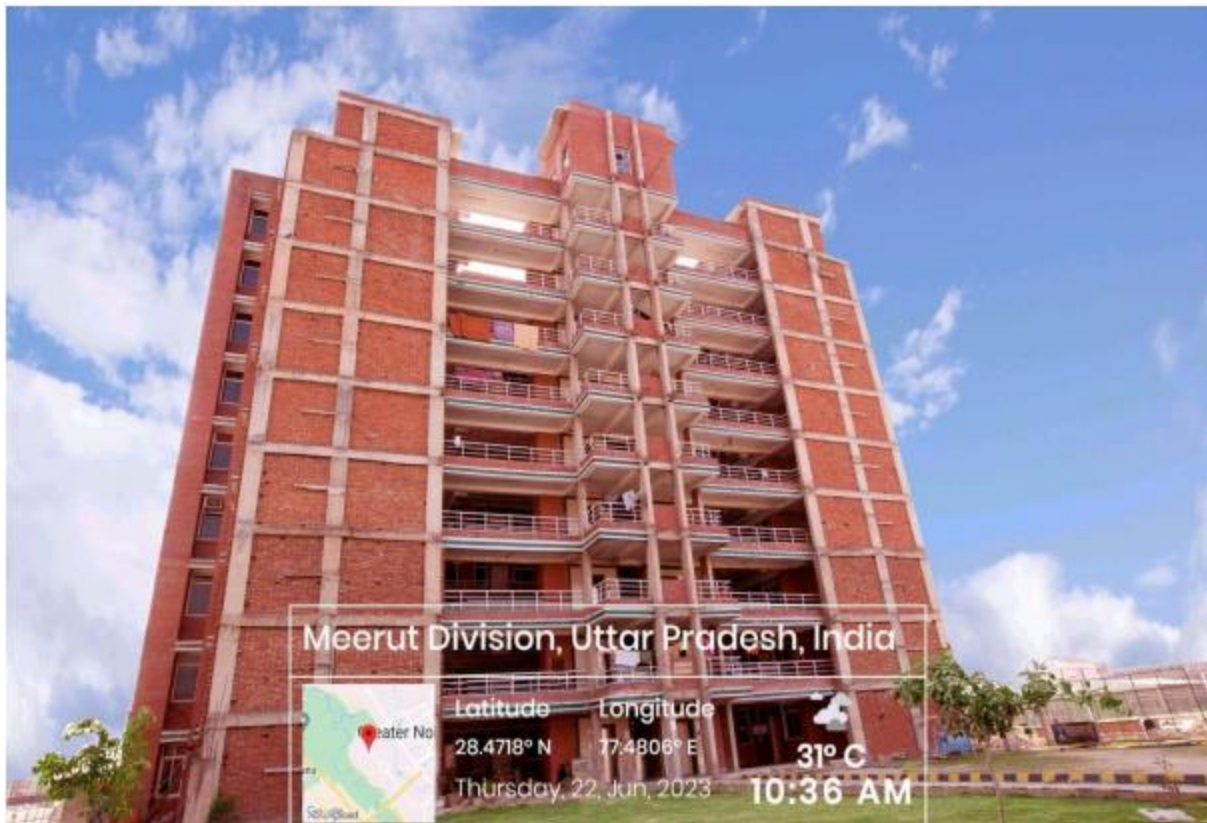


Fig 44 New Staff quarters Block 27

Nursing Quarter, Block 42



Fig 45 Nursing Staff Quarters Block 42

11.4.5 Affordable housing for students

Provide affordable housing for students

Response: Yes

Sharda university provides affordable student housing for both national and international students.

The University has 11 boys' and girls' hostels with 1987 rooms (single/double/triple occupancy) to cater to the needs of residing national and international students coming from all over the world. Hostel allotment is based on first come-first serve basis, subject to availability. Hostels provide an eco-system which helps the inmates to live in harmony and peace for their all-round development. Following are the details of the same –

Hostels and the accommodation (2022-23)

S. No.	Name of Hostel	Reserved for(boys/girls)	Total Room Available	Total Seats	Student Residing
1	Vivekanand Hostel	Boys	91	267	258
2	Tagore Hostel	Boys	91	267	260
3	Jawahar Hostel	Boys	112	224	216
4	Mandela Hostel	Boys	247	330	306
5	Vardhman Hostel	Boys	248	496	458
Total			789	1636	1498
6	Mandela Hostel	Girls	504	822	805
7	Sarojni Hostel	Girls	147	277	269
8	Kasturba Hostel	Girls	147	277	265
9	Mother Teresa Hostel	Girls	30	50	40
10	Indira Hostel	Girls	250	592	592
Total			1078	1966	1971
11	PG Hostel	Common	120	370	329
Total			1987	3972	3798



Fig 46 University student residences

11.4.6 Pedestrian priority on campus

Prioritise pedestrian access on campus

Response: Yes

The university prioritizes the safety, convenience, and accessibility of pedestrians over other modes of transportation by implementing pedestrian priority at the campus. The designated multilevel parking, walkways, footpaths, and crosswalks has significantly reduced the potential hazards associated with vehicular traffic on the campus. Creating pedestrian-friendly pathways and open spaces has fostered better connectivity between different parts of the campus, encouraging interaction among students, faculty, and staff.



Fig 47 Pedestrianized area



Fig 48 Traffic barriers to restrict vehicular movement



Fig 49 Pedestrianized area



Fig 50 Vehicular and pedestrian segregation at the entry points

11.4.7 Local authority collaboration regarding planning and development

Work with local authorities to address planning issues and development, including ensuring that local residents are able to access affordable housing

Response: Yes

The university keeps working in constant collaboration with the local authorities through various collaborative and community-oriented approaches. The university also runs a community connect programme under which students and faculty of the university promoting deeper interactions between university and local communities for identification and solution of real-life problems faced by the communities in a spirit of mutual benefit. Following are the two major collaborative exercises done by the university-

1. Cycleway as an alternative way in Knowledge Park III

ABSTRACT - Pedestrian traffic accidents have become a severe safety issue around the world, particularly in emerging nations, due to increased population density, rapid urbanization, and insufficient attention to traffic laws by both drivers and walkers. Oncoming automobiles in the traffic flow are needed to pause in order to gain priority at the pedestrian crossing due to a lack of attention to pedestrian passing traffic limitations. Unrestricted motor vehicle mobility is indicated by unlimited bends, flyovers, and grade separators, putting people in danger. Enhance the speed of motorized vehicles to increase capacity and encourage a continuous flow, reducing their waiting time. Traffic accidents are caused by a variety of variables including road layout, vehicles, and pedestrians, including their interactions. The behavior on crossing of a pedestrian were observed in provision of adequate pedestrian services in the desirable place, including the improvement of their safety when passing the road. The results were achieved by analyzing pedestrian crossings before and after implementation. Pedestrians, as being the most vulnerable road users, this paper is mainly concerned about the behavior or act of pedestrian while crossing the road. The study area for this paper is taken near by the Pari chowk metro station, Pari chowk, Knowledge Park-3, Greater Noida, UP, India. On the basis of pedestrian count and their behavior, the study was done. Excessive speed, inefficient driver skill, failures to give pedestrians priority, drivers not respecting the right-hand rule, pedestrians not respecting traffic rules, drivers not respecting other road users, inadequate pedestrian awareness of traffic safety problems, due to poor road safety furniture, lack of sufficient walkway, and narrow streets are among the major contributing factors for road traffic violations in the study area. The findings also demonstrate that some local government actions, such as putting rumble strips and speed breakers in specific high-traffic locations and providing road users, particularly pedestrians, with training at schools and religious institutions, have reduced the number of traffic accidents.

2. Analysis of pedestrian behaviour due to faulty acts near metro station, Pari Chowk, Greater Noida

ABSTRACT - Cycleway has been used as an alternative way in many parts of the world. And lately it has been implemented in India as well. Places like Bengaluru, Pondicherry, and Chennai etc. have been using such modes for transportation for a while now. The scope of this idea being implemented in Knowledgepark is immense as the crowd over here is very suitable for this. The

majority of people in this region are students. Cycling can be a low cost, less virus transmitting mode of transportation. Also due to the small size of the targeted place (Knowledge park), this can be implemented more effectively and more people are likely to participate. There is increase in cycle use, and it is obvious that these gains are supposed to arise from individuals opting to pedal rather than drive. As a result of the growing interest, there are likely to be more demands for thorough examination of proposed schemes in terms of increased cycling levels, modal shift, and, ultimately, quantitative benefits to present and future cyclists. Local governments and others must be able to analyse cycling facilities in order to determine whether or not to invest in them and, in the event that finances are restricted, to choose between several systems. The models developed as a result of the study discussed in this paper are expected to be used to evaluate various cycle facilities and proposed schemes, estimate modal share repercussions, and assess investment benefits

3. 4th Technovation Hackathon & Innovation Budge 2022

Apart from the research collaborations the university hosts technical event 'Hackathon' focusing on technological advancement of cities. It was a technical event based on the parameters of making **Smart City**. The students worked on the following themes and came out with some feasible solution such as-

- Smart Health and Hygiene
- Smart Safety, Security and Surveillance
- Smart Transportation and pollution control
- Smart Citizen and Governance

1559 students participated in the event. There were prizes for students which were worth Rs 3.5 Lakh



Fig 51 Sample certificate Hackathon

4th TECHNOVATION HACKATHON & INNOVATION BUDGE

Total Prize Worth INR 3.5 Lakh

Top Prize 1 Lakh

3rd to 5th February, 2022 | Blended Mode

Themes

- SMART HEALTH & HYGIENE
- SMART SAFETY, SECURITY & SURVEILLANCE
- SMART TRANSPORTATION & POLLUTION CONTROL
- SMART CITIZEN, GOVERNANCE, AMENITIES & FACILITIES DESIGN

Convener:
Prof. (Dr.) Parma Nand
 Dean, Academic Affairs,
 Sharda University

Free Registration

Registration Link:
<https://forms.gle/AyTuixu2EzVn527D6>

Contact No. : +91-9899997263, +91-9979273876

Registration	15 th to 31 st January, 2022
Project Development / Implementation	1 st February, 2022
Short listing of projects	3 rd February, 2022
Evaluation	4 th to 5 th February, 2022
Final Evaluation	5 th February, 2022
Declaration of Result	6 th February, 2022

Fig 52Poster_Hackathon 2022



Figure 4: Group Photo



Figure 5: Felicitation

Head of the Department
Computer Science & Engineering
School of Engineering & Technology
Sharda University, Greater Noida.

Fig 53 Hackathon Event completion report

11.4.8 Planning development - new build standards

Build new buildings to sustainable standards

Response: Yes

Sharda University has made substantial strides in its commitment to sustainable development by constructing new buildings that adhere to rigorous environmental standards. As a result of sustainable practices here, Sharda University was ranked 23rd across India in the Green Institutional rankings, 2022. With a comprehensive focus on minimizing its ecological footprint and fostering sustainable practices, the university has incorporated several key strategies and principles into its construction processes.

First and foremost, Sharda University has embraced the concept of green building design, integrating energy-efficient technologies, renewable energy sources, and eco-friendly materials into the construction of its new buildings specially the under-construction building of **Cancer hospital** at the university which has already received GRIHA – Pre certification. By leveraging advanced architectural techniques and sustainable building materials, such as recycled steel and energy-efficient glass, the university ensures that its infrastructure aligns with the principles of environmental conservation and resource efficiency.s

Evidence



Fig 54 GRIHA pre certification for Cancer Hospital Building

**SUSTAINABLE INSTITUTIONS OF INDIA
THE GREEN INSTITUTIONAL RANKINGS 2022**

Certificate of Excellence

IN PURSUIT OF EXCELLENCE TOWARDS PRACTICING
SUSTAINABLE EDUCATION, THIS CERTIFICATE IS AWARDED TO

Sharda University, UP

and is ranked No. 23 across India
in the Green Institutional Rankings 2022.

R
World Institutional
RANKING 


Executive President

Fig 55 Green Institutional Ranking Certificate, 2022

11.4.9 Building on brownfield sites

Build on brownfield sites, where possible

Response: No
